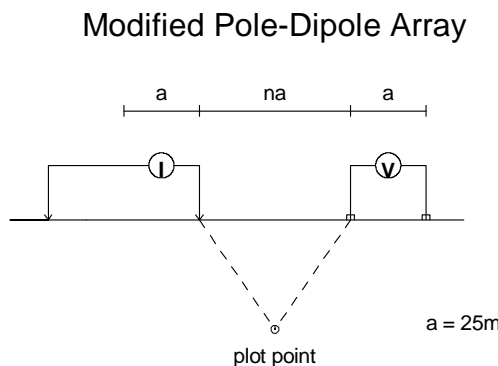


STACKED PSEUDOSECTIONS MAP
APPARENT RESISTIVITY

Modified Pole-Dipole Array

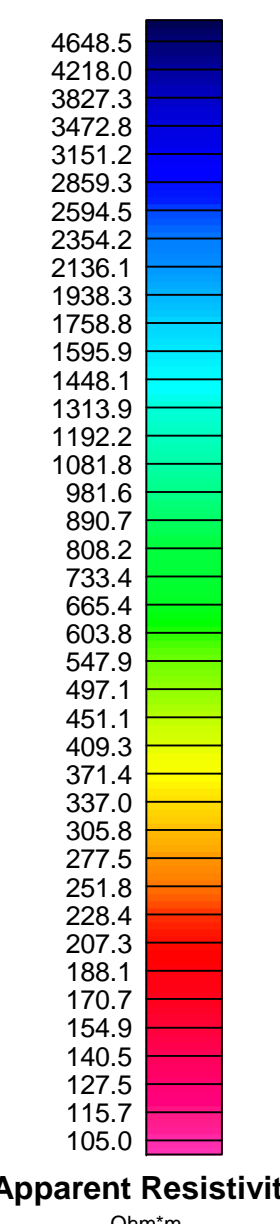
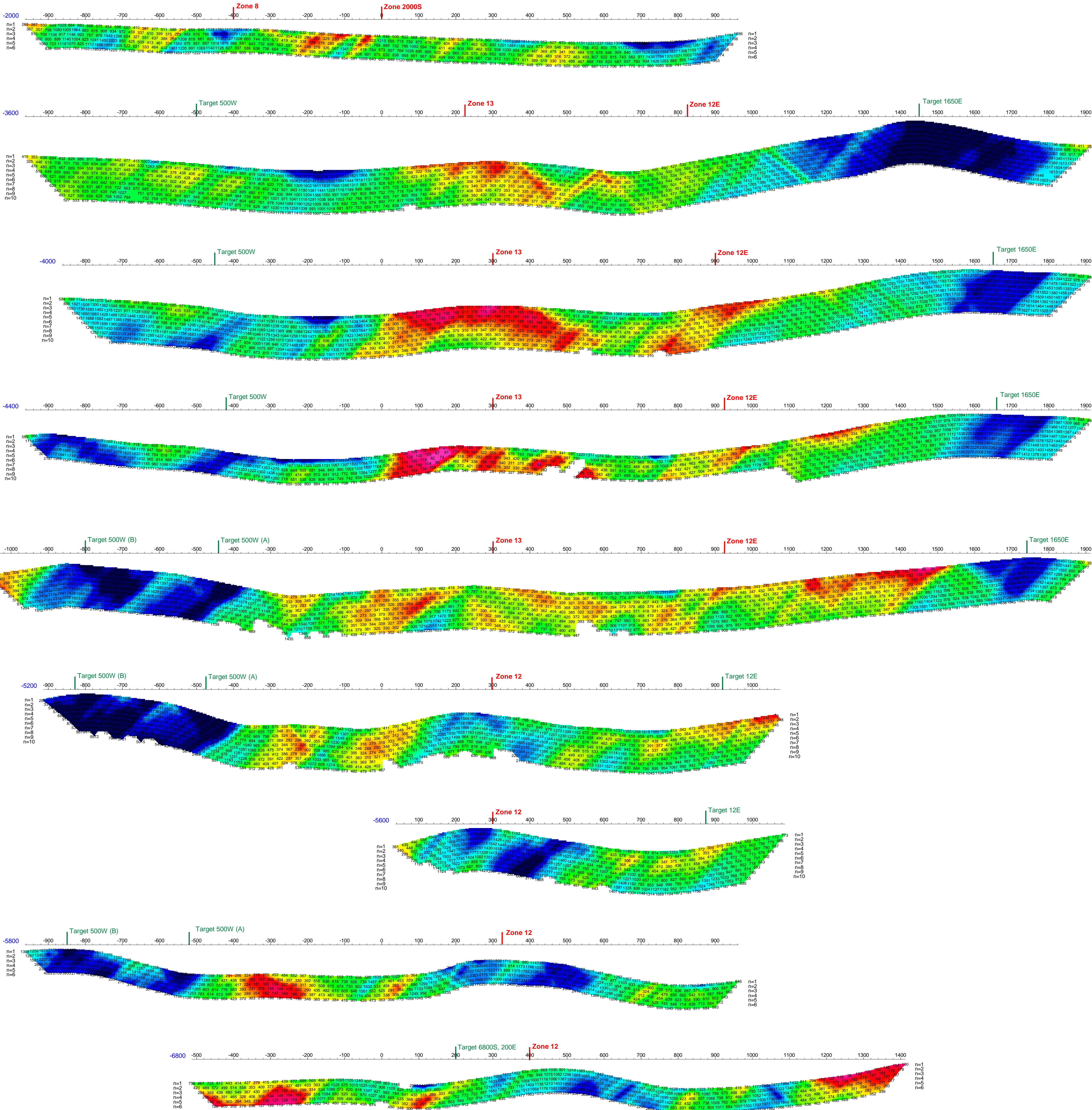
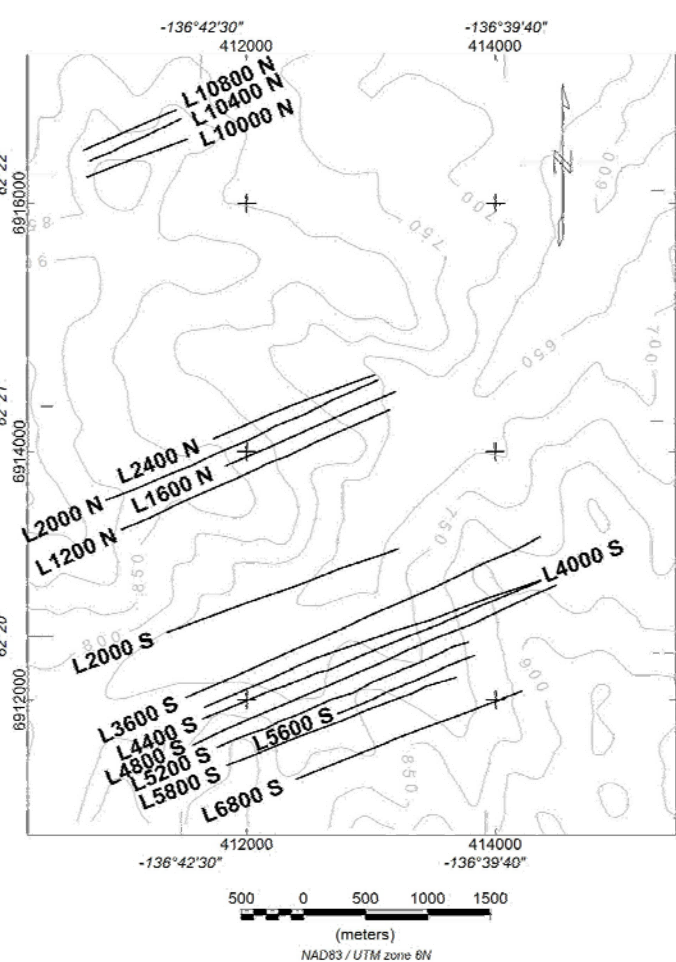


L2000S Stationary electrode at West end of line.
L3600S Stationary electrode at Stations 1000W & 275E.
L4000S Stationary electrode at Stations 900W & 275E.
L4400S Stationary electrode at Stations 1000W & 450E.
L4800S Stationary electrode at West end of line.
L5200S Stationary electrode at West end of line.
L5600S Stationary electrode at West end of line.
L5800S Stationary electrode at West end of line.
L6000S Stationary electrode at West end of line.

Receiver: Iris ElecPro

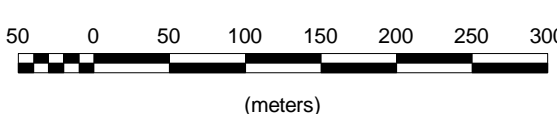
Transmitter: GDD T-xII 3.6KW

Data File: all lines 25-final.gdb



Apparent Resistivity
Ohm-m

Scale 1:5000



WESTERN COPPER CORPORATION

INDUCED POLARIZATION SURVEY

CARMACKS COPPER PROJECT

APPARENT RESISTIVITY - 25m DIPOLES

STACKED SECTIONS - SOUTH LINES

Mining District: Whitehorse Datum: Local Grid

NTS: 1:15 i/07 Drawn by: HS

Job: WRN-7506-YT Date: 16 Jan 08

AURORA GEOSCIENCES LTD.